







FRENCH HORN

# JAZZ BAND WARM-UP SHEET

II V I (DORIAN, MIXOLYDIAN, IONIAN)

JOSEPH COVILL  
LINCOLN MIDDLE SCHOOL

DORIAN

MIXOLYDIAN

IONIAN

Musical staff with treble clef and 4/4 time signature. It contains three measures of music: a whole note G4, a whole note A4, and a whole note B4.

RHYTHM PATTERNS

SWING

(A)

Musical staff with treble clef and 4/4 time signature. It contains four measures of music with eighth and quarter notes, including accents and slurs.

(B)

Musical staff with treble clef and 4/4 time signature. It contains four measures of music with eighth and quarter notes, including accents and slurs.

(C)

Musical staff with treble clef and 4/4 time signature. It contains four measures of music with eighth and quarter notes, including accents and slurs.

(D)

Musical staff with treble clef and 4/4 time signature. It contains four measures of music with eighth and quarter notes, including accents and slurs.

LATIN

(E)

Musical staff with treble clef and 4/4 time signature. It contains four measures of music with eighth and quarter notes, including accents and slurs.

TRUMPETS

# JAZZ BAND WARM-UP SHEET

II V I (DORIAN, MIXOLYDIAN, IONIAN)

JOSEPH COVILL  
LINCOLN MIDDLE SCHOOL

DORIAN

MIXOLYDIAN

IONIAN

A musical staff in treble clef with a 4/4 time signature. It contains three measures of chord voicings. The first measure is for the Dorian mode (F major 7), the second for the Mixolydian mode (F major 7 with a flat 7), and the third for the Ionian mode (F major 7). Each measure shows a triad with a 7th chord voicing.

RHYTHM PATTERNS

SWING

**A**

A musical staff in treble clef with a 4/4 time signature. It contains four measures of a swing rhythm pattern. The notes are quarter notes with accents (^) and eighth notes with accents (^) and beams. The pattern is: quarter, eighth, quarter, eighth, quarter, quarter, quarter, quarter.

**B**

A musical staff in treble clef with a 4/4 time signature. It contains four measures of a swing rhythm pattern. The notes are quarter notes with accents (^) and eighth notes with accents (^) and beams. The pattern is: quarter, quarter, quarter, quarter, quarter, quarter, quarter, quarter.

**C**

A musical staff in treble clef with a 4/4 time signature. It contains four measures of a swing rhythm pattern. The notes are quarter notes with accents (^) and eighth notes with accents (^) and beams. The pattern is: quarter, quarter, quarter, quarter, quarter, quarter, quarter, quarter.

**D**

A musical staff in treble clef with a 4/4 time signature. It contains four measures of a swing rhythm pattern. The notes are quarter notes with accents (^) and eighth notes with accents (^) and beams. The pattern is: quarter, quarter, quarter, quarter, quarter, quarter, quarter, quarter.

LATIN

**E**

A musical staff in treble clef with a 4/4 time signature. It contains four measures of a Latin rhythm pattern. The notes are quarter notes with accents (^) and eighth notes with accents (^) and beams. The pattern is: quarter, quarter, quarter, quarter, quarter, quarter, quarter, quarter.





BASS

# JAZZ BAND WARM-UP SHEET

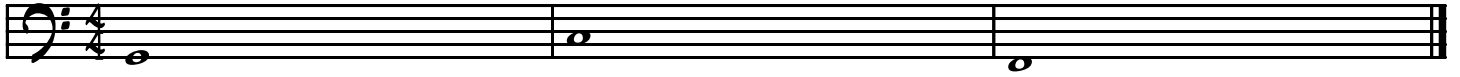
II V I (DORIAN, MIXOLYDIAN, IONIAN)

JOSEPH COVILL  
LINCOLN MIDDLE SCHOOL

DORIAN

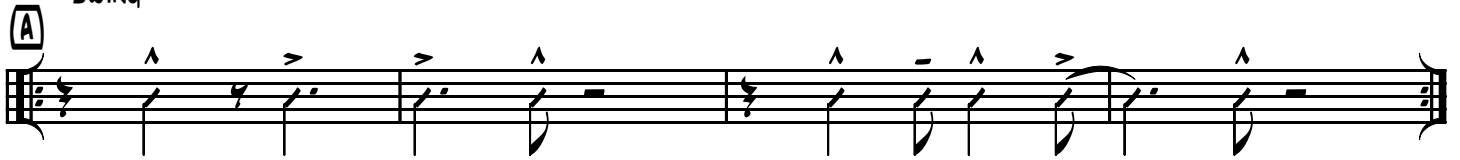
MIXOLYDIAN

IONIAN



## RHYTHM PATTERNS

SWING



LATIN

